

Benson Theater  
6054 Maple St., Omaha NE 68104

**Contact:** John Forsman, Office 402-991-4333  
[john@bensontheatre.org](mailto:john@bensontheatre.org)

### **Stage**

Stage Size 25' 9" wide & 20' 0" deep

Pipe Plot:

1. Main Curtain on Traveler operates from Stage Left
2. Video Screen
3. Open
4. LX 1
5. MS Legs
6. Border
7. LX 2
8. US Black, splits @ center, Traveler, no rope

1 Dressing/Green Rm with 2 curtained partitions.

**Seating:** 136 – 156 depending on chair/table arrangements.

**Loading door:** Alley - double doors @ street level. Stage Right. No storage available.

### **Power**

2) Company Switch: 208V/120V, 3 Phase, 100 Amp. SL & SR for bare tails or Cam-Loc.

Ground is reversed. Neutral has normal & reversed.

### **Intercom**

Clear-Com MS-702 Base station with HS-6 handset @ Sound Booth

Clear-Com KB-702 In-wall com station w/ HS-6 Handset in Green/Dressing Rm

Clear-Com KB-702 In-wall com station @ Stage Right

Clear-Com CC-400-X4 Headsets, Double Muff (5). 1 dedicated to Lighting Console

Clear-Com RS-701 Beltpack, Single Channel (4). 1 dedicated to Lighting Console

System connections available SL, SR, & Lighting/Video Booth

**Audio/Video System** operates in 5 Modes controlled by 3 AMX stations

Theater/Dante: Full system for Live performance

Theater/Analog: provides routing for Analog console connection

Lecture: provide 4 wireless microphones

Presentation: 4 wireless microphone + laptop AV inputs (VGA & HDMI) + DVD

Movie: supports 7.1 surround audio

3 AMX stations are located @ SL audio rack, Sound booth & Video Booth

Streaming to 2 ports available

Streaming Encoder & MP4 Recorder: DataVideo NVS-34

Benson Theater  
6054 Maple St., Omaha NE 68104

Laptop AV inputs located SL, Sound Booth & Lighting/Video Booth

**Audio**

Dante networked Audio

Soundcraft SI Performer 3 Mixing console with Digital stage box

L-Acoustics LCR with 7.1 surround (sides & rear)

Left, Center, Right; L-Acoustics A10i 2 Way; 10" LF; 2.5" HF

Surrounds: L-Acoustics X8 2 Way; 8" LF; 1" HF

Subs: 4) L-Acoustics KS211; 21" LF

db Technologies Stage monitors

4) db Technologies DVX DM28. Powered 750 Watt, 2 Way, 2) 8" LF, 1) 1" HF

1) db Technologies DVX DM15. Powered 750 Watt, 2 Way, 1) 15" LF, 1) 1.4" HF

Lobby speakers; JBL Control 65P/T

Hearing Assistance

Listen Technologies LW-100P-02. For use with personal Smart phones & ear buds.

Loop. For use with personal hearing aids equipped & enabled for Loop listening.

12) Wireless Microphone channels, ULXD4Q-G50

12) Shure ULXD1-G50 bodypack transmitters

12) Shure TH53T/O-MTQG Headset microphones

4) Shure ULXD2/B58 handheld transmitters; Beta 58 capsule

1) Shure Beta 91A

1) AKG D112

4) AKG D40

3) AKG C430

1) Sennheiser e602-II

4) Sennheiser e604

2) Sennheiser e612

6) BSS AR-133 Direct Box, active

1) Whirlwind podDI Direct Box Stereo In Mono out.

1) Solid State Recorder; Tascam SS-R250N

1) Multi Media Player (Bluetooth/USB/SD/CD/Aux & AM/FM): Denon DN-300Z

1) Whirlwind 6 chn stage box to fan, 50 ft.

1) Whirlwind 6 chn stage box to fan, 75 ft.

2) Whirlwind 12 chn stage box to fan, 75 ft.

Basic complement of microphone cables & stands

Benson Theater  
6054 Maple St., Omaha NE 68104

**Lighting**

High End Systems Road Hog 4 lighting console located in Lighting Booth  
Hog can be located & operated @ Sound booth.

2 trusses in house with LED moving lights

8) HES Solaframe Theatre

8) HES SolaWash 1000

Truss nearest the stage has 6 LED "Leko" fixtures

6) ETC ColorSource Spot Jr.

2 pipes over stage with LED "Leko's" & "PARS".

8) ETC ColorSource Spot Jr.

16) ETC ColorSource Par

1) Net3 DMX adapter ETC N3T2G-2F available for ground lights.

ETC EchoTouch touchscreen @ Stage Left

House light controls @ SL, Lighting Booth, & House Lobby

**Attachments**

AV-05 (Venue Floor Plot)

AV-07 (Video Location)

LT-02 (Lighting & Video Booth location)

Lighting Concept (Light Plot)

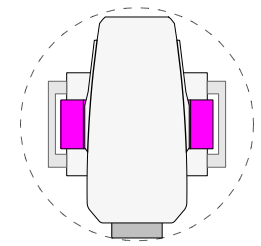
Stage Plot (from Lavine)

## Benson Theater Lighting Concept

DESIGNED BY P. Franks	DRAWN BY Edited by MM
SCALE 3/8" = 1'-0"	DATE May 20th, 2020
SHEET # 1 of 3	REVISION # 3
FILENAME Benson Theater 2020.vwx	

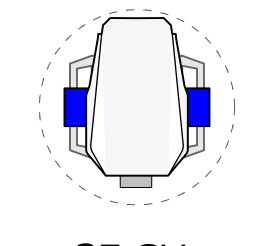
### SYMBOL KEY

(8) HES SolaFrame Theatre



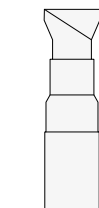
47 CH.

(8) HES SolaWash 1000



37 CH.

14) ETC ColorSource Spot Jr.

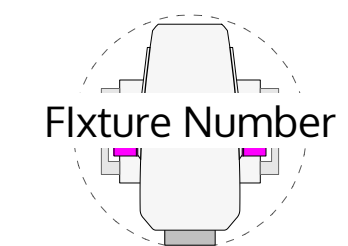


Mode: Direct 6 CH.

(16) ETC ColorSource Par

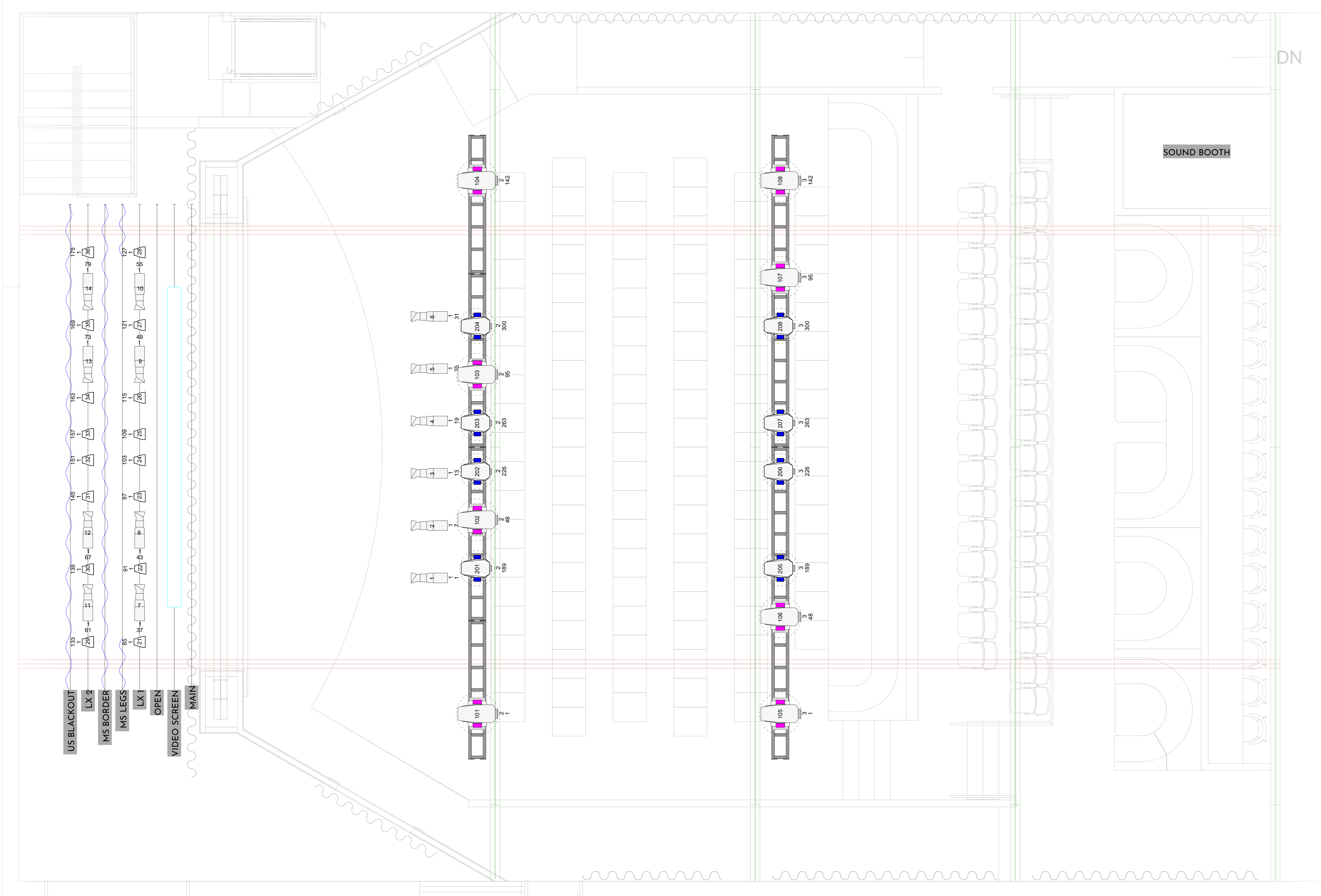


Mode: Direct 6 CH.



Universe  
Address

All designs, constructions, and other disclosures set forth herein are the property of Theatrical Media Services, Inc. Such information is imparted to you in confidence. In accepting this information you agree not to reproduce it, to manufacture it, disclose it, or have it manufactured in whole or in part without the written permission of Theatrical Media Services, Inc. The designer is unqualified to determine unsafe rigging, construction, and engineering of this project and assumes no responsibility herein. Execution of this design must comply with all federal and local fire and safety codes.



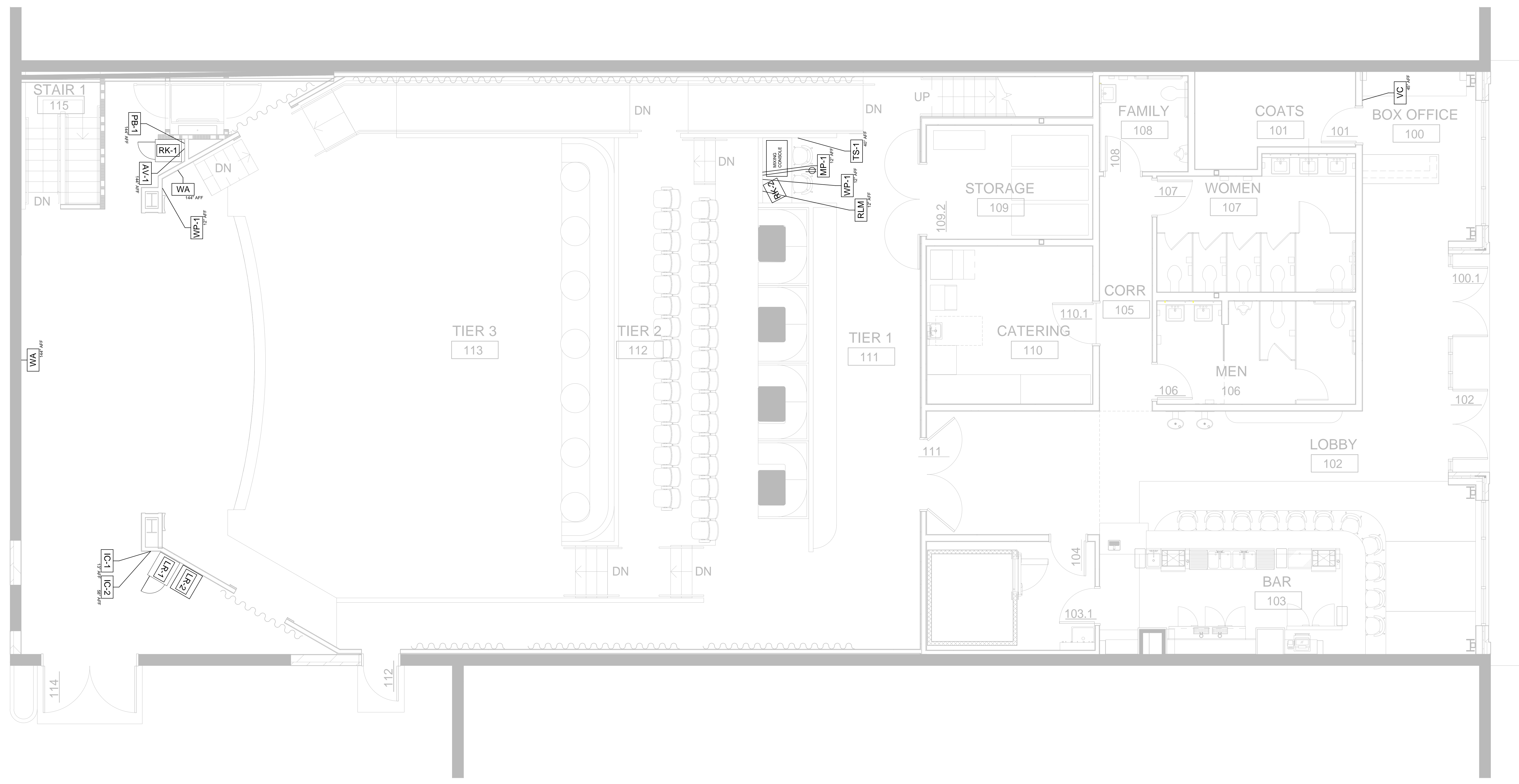
DN

**BENSON THEATER  
 AUDIO VISUAL SYSTEM**

6054 Maple Street  
 Omaha, Ne 68104  
 402-991-4333

No.	REVISION / ISSUE	DATE
-1	-FINISH UP	3-19-21
-	-	-
-	-	-

NOTES



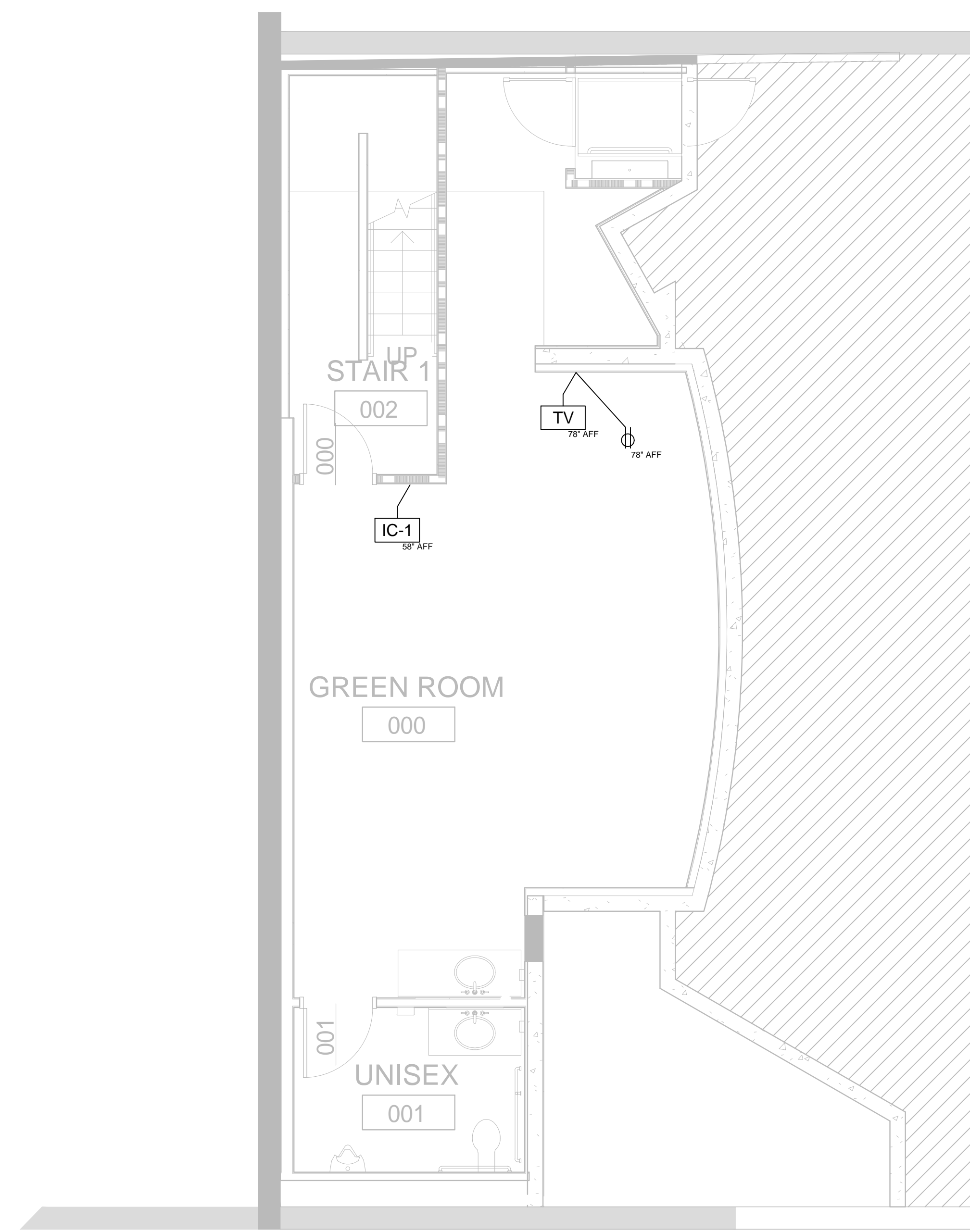
1 AV SYSTEMS -FLOOR PLAN  
 AV-05 SCALE: 1/4" = 1'-00"

**BENSON THEATER  
 AUDIO VISUAL SYSTEM**

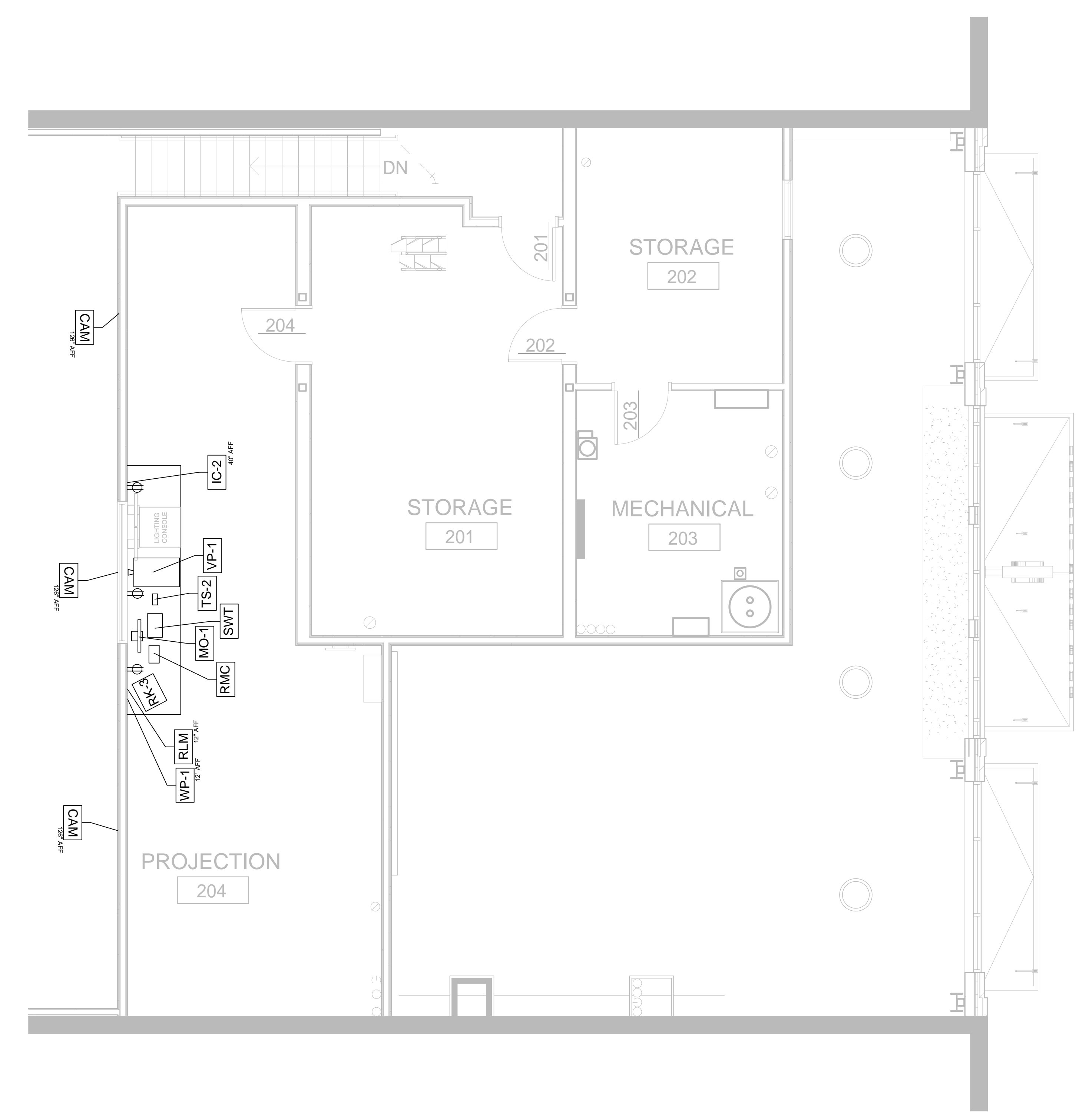
6054 Maple Street  
 Omaha, Ne 68104  
 402-991-4333

No.	REVISION / ISSUE	DATE
-1	-FINISH UP	3-19-21
-	-	-
-	-	-

NOTES



1 AV SYSTEMS -BASEMENT PLAN  
 AV-07 SCALE: 1/4" = 1'-00"



2 AV SYSTEMS -PROJECTION BOOTH PLAN  
 AV-07 SCALE: 1/4" = 1'-00"

SHEET NUMBER

**AV-07**

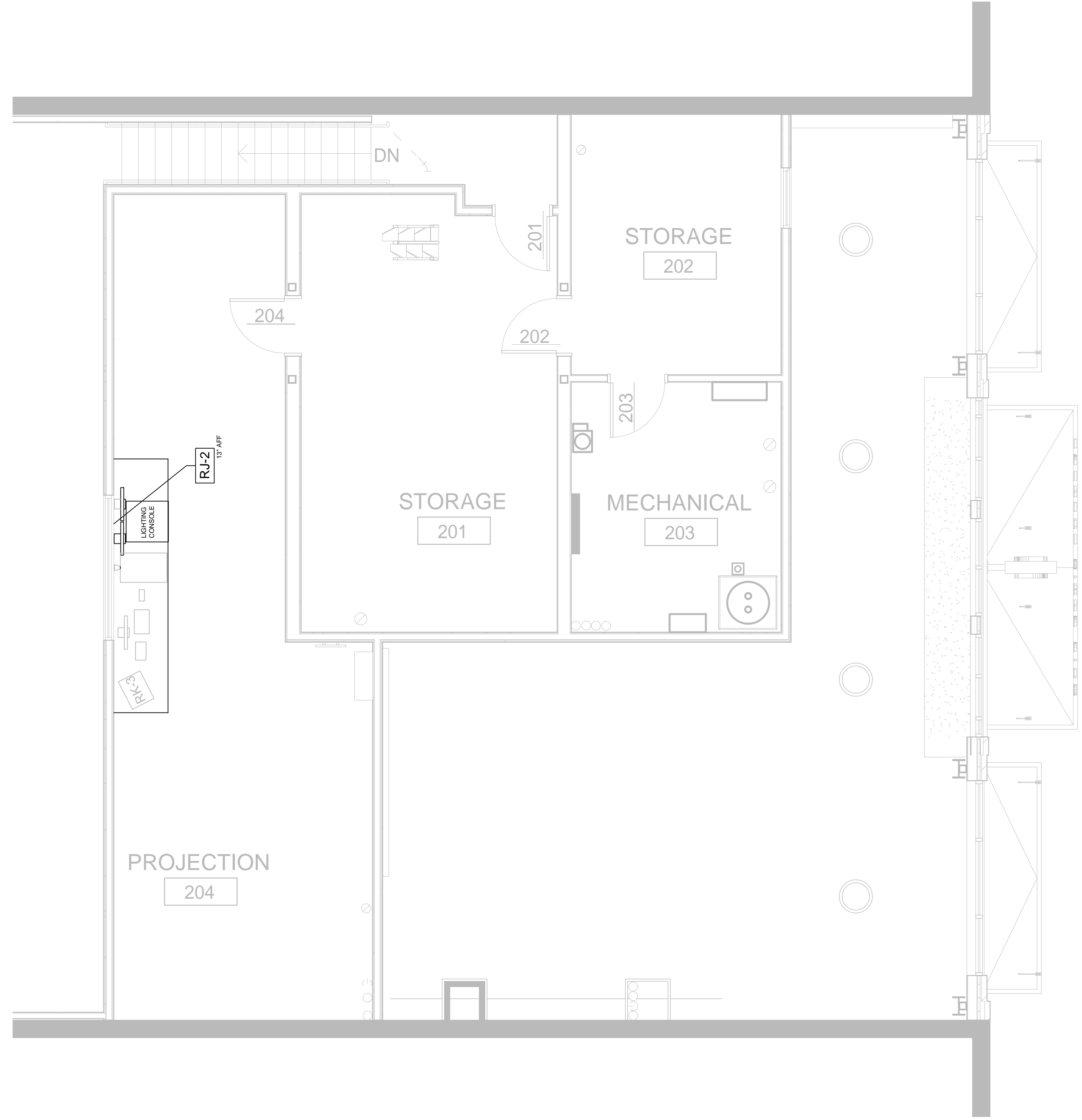
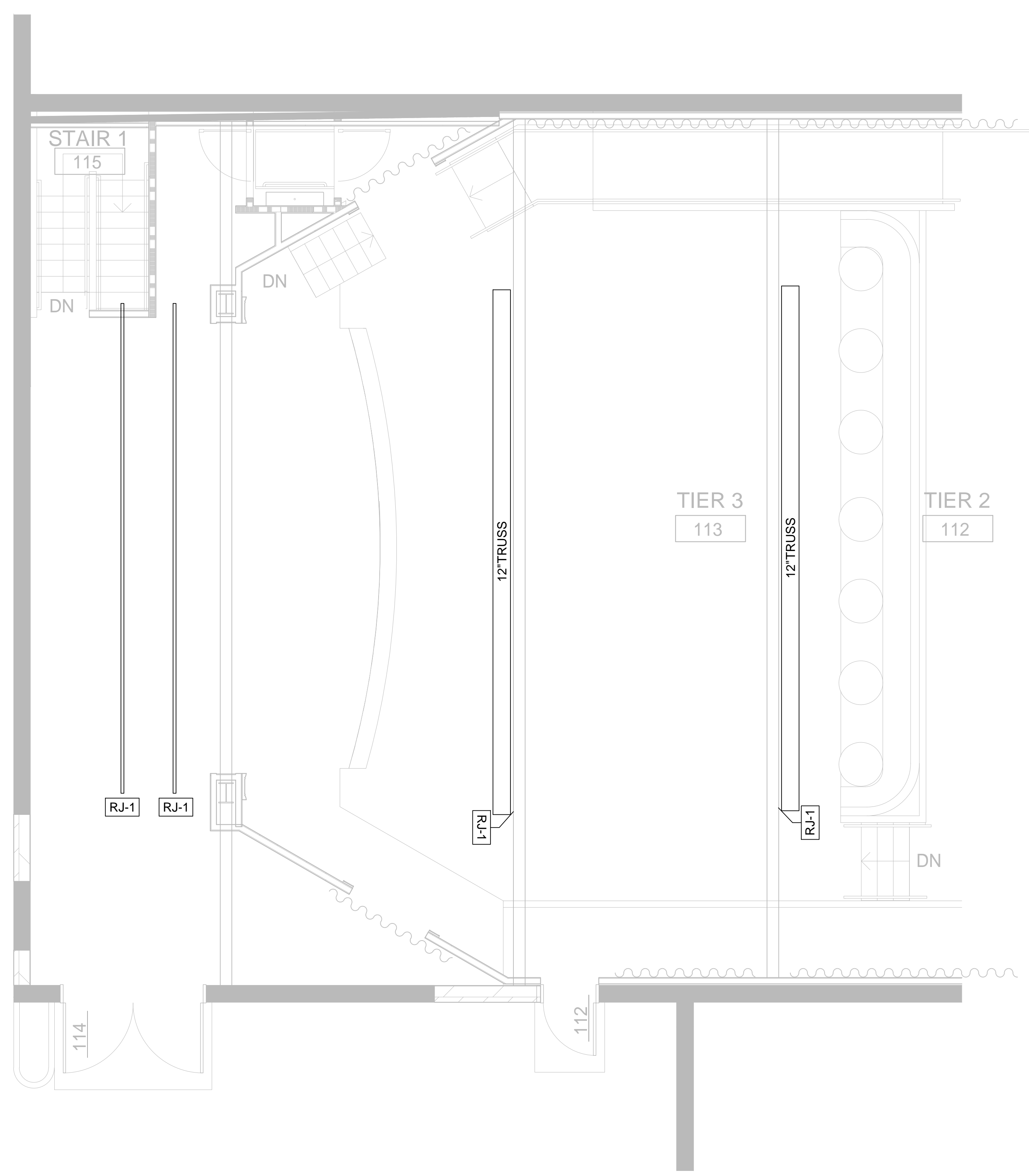
**BENSON THEATER LIGHTING SYSTEM**

6054 Maple Street  
 Omaha, Ne 68104

402-991-4333

No.	REVISION / ISSUE	DATE
-1	-FINISH UP	3-19-21
-	-	-
-	-	-

NOTES



1 LIGHTING SYSTEMS -CEILING PLAN  
 LT-02 SCALE: 1/4" = 1'-00"

2 LIGHTING SYSTEMS -PROJECTION BOOTH PLAN  
 LT-02 SCALE: 1/4" = 1'-00"

SHEET NUMBER

**LT-02**